

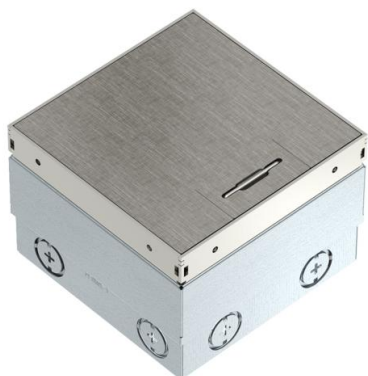
Technical data sheet

UDHOME2 floor socket, without floor covering recess, freely equippable, stainless steel, decorative plate: cross hatch
Item number: 7368263



Square floor socket for use in dry-care cavity and screed floors in indoor areas. Installation housing with pre-marked insertion openings for pipes (M20/M25). Cover adjustable to top edge of floor covering using four height-adjustment supports. The minimum installation depth is 100 mm, the height-adjustment range is +35 mm.

Frame and cover made of stainless steel and visible in the floor covering. Cover with decorative plate cross hatch. Up to 2 modular data sockets can be installed in the optional mounting support. The load-bearing capacity of 15 kN is only guaranteed when in an unused state.



Master data

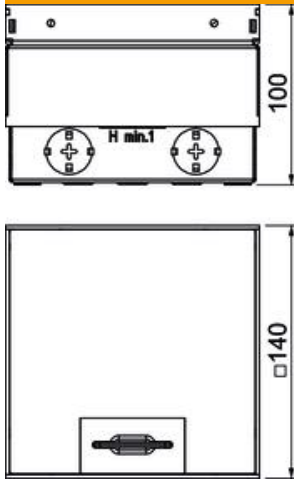
Item number	7368263
Type	UDHOME2 GV D3
Description 1	Floor socket
Description 2	unequipped, Cross hatch
Manufacturer	OBO
Dimension	140x140x110
Smallest sales unit	1
Unit of quantity	Piece
Weight	220 kg
Weight unit	kg/100 pc.

Technical data sheet

UDHOME2 floor socket, without floor covering recess, freely equippable, stainless steel, decorative plate: cross hatch
Item number: 7368263



Dimensions



Length	140 mm
Width	140 mm
Height	100 mm

Technical data

Number of installable devices	2
Version for	Square
Cable outlet version	Swivellable cord outlet
Floor covering protection frame	no
Floor care	Dry
Seal installation option	no
Application when used	6.101.1 Dry floor care
Application when unused	6.101.1 Dry floor care
Floor height, max.	135 mm
Floor height, min.	100 mm
Suitable for raised floor installation	yes
Suitable for screed-flush closed underfloor ducts	no
Suitable for screed-covered underfloor ducts	no
Suitable for cavity floor installation	yes
Suitable for wet care	no
Suitable for underfloor ducts	no
Device support to accept mounting boxes	no
With floor covering recess	no
Nominal size for device installation units	2
Standard	EN 50085-2-2
Frame version	Floor covering contact edge
Protection rating (IP) when used	IP20
Protection rating (IP) when unused	IP40
Protection rating IK code	IK10
Heavy-duty version	no
Vertical load, small area	to 3,000 N
Approvals	VDE

Technical data sheet

UDHOME2 floor socket, without floor covering recess, freely equippable, stainless steel, decorative plate: cross hatch
Item number: 7368263



Technical data

Opening mechanism

Handle