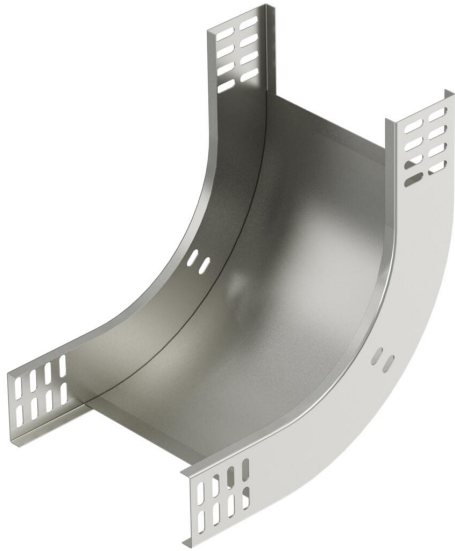


# Technical data sheet

## 90° vertical bend, rising 60 A2

Item number: 7007119



90° rising vertical bend, for all cable tray types of 60 mm side height.  
The vertical bend is pushed over the end of the cable tray and screwed tight.  
Fastening materials should be ordered separately.



**A2** Stainless steel

**2B** Bright, treated

### Master data

Item number	7007119
Type	RBV 650 S A2
Description 1	90° vertical bend
Description 2	rising
Manufacturer	OBO
Dimension	60x500
Material	Stainless steel
Surface	Bright, treated
Surface standard	
Smallest sales unit	1
Unit of quantity	Piece
Weight	216 kg
Weight unit	kg/100 pc.

# Technical data sheet

90° vertical bend, rising 60 A2

Item number: 7007119



## Dimensions



Width	500 mm
Width	20 in
Height	60 mm
Height	2 in
Plate thickness	1 mm
Dimension B	500 mm

## Technical data

Bend (angle)	90°
Connector version	Without connectors
Maintain electrical functions	no
Mounting perforation in base	no
NATO hole pattern	no
Change of direction	Vertical rising
Rustproof steel, pickled	no
Side perforation	no
Wide-span version	no
Type of connector, cable support system	Screwed