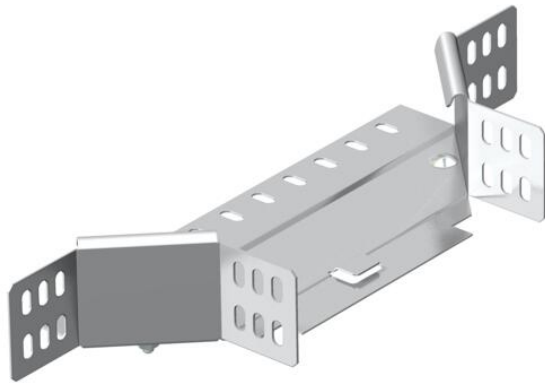


Technical data sheet

Add-on tee 60 A2

Item number: 7136120



Add-on tee for horizontal and vertical use. For all cable tray types of 60 mm side height.
The fitting is shipped in an unmounted state.
Including appropriate fastening material.



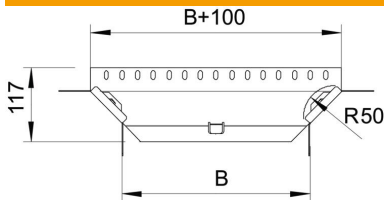
A2 Stainless steel

2B Bright, treated

Master data

Item number	7136120
Type	RAA 610 A2
Description 1	Add-on tee
Description 2	with 2 angle connectors
Manufacturer	OBO
Dimension	60x100
Material	Stainless steel
Surface	Bright, treated
Surface standard	
Smallest sales unit	1
Unit of quantity	Piece
Weight	44.2 kg
Weight unit	kg/100 pc.

Dimensions



Width	100 mm
Width	4 in
Height	60 mm
Height	2 in
Plate thickness	1 mm
Dimension B	100 mm
Dimension R	50 mm

Technical data sheet

Add-on tee 60 A2

Item number: 7136120



Technical data

Bend (angle)	90°
Connector version	Supplied connectors
Maintain electrical functions	no
Material thickness, floor plate	1 mm
NATO hole pattern	no
Change of direction	Horizontal
Rustproof steel, pickled	no
Wide-span version	no
Type of connector, cable support system	Screwed
Rail thickness	1.25 mm