

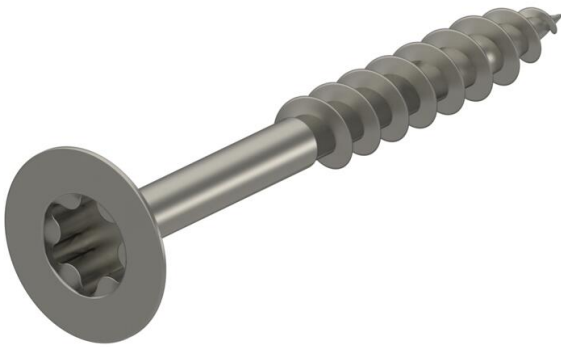
Technical data sheet

Chipboard screw, with Torx, countersunk head, stainless steel

Item number: 3191062



Stainless steel wood screw with countersunk head and Torx drive for fastenings in interior and exterior areas.
Areas of use: Wood, chipboard, plasterboard panels and plastic anchors.



A4 Stainless steel

2B Bright, treated

Master data

Item number	3191062
Type	OTSC 4,0x50 A4
Description 1	Chipboard screw
Description 2	countersunk head, TX 20 drive
Manufacturer	OBO
Dimension	4x50mm
Material	Stainless steel
Surface	Bright, treated
Surface standard	
Smallest sales unit	100
Unit of quantity	Piece
Weight	0.31 kg
Weight unit	kg/100 pc.

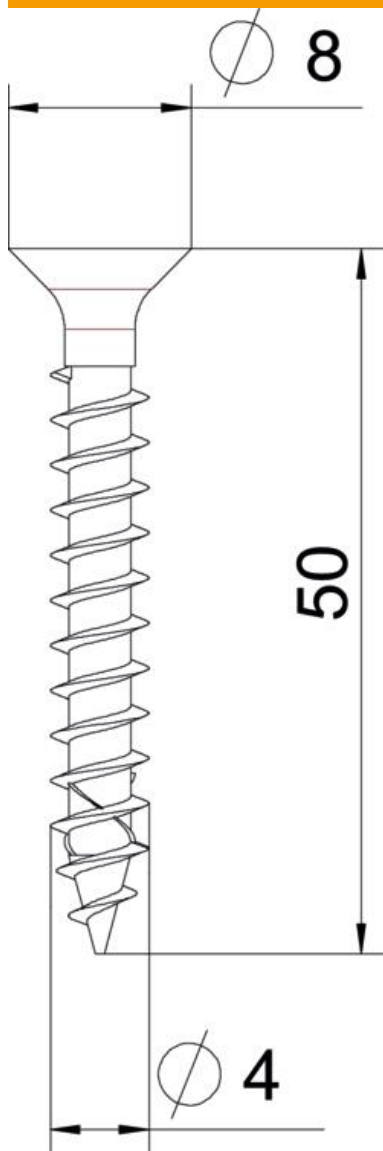
Technical data sheet

Chipboard screw, with Torx, countersunk head, stainless steel

Item number: 3191062



Dimensions



Length	50 mm
Dimension D	4 mm
Dimension L	50 mm

Technical data

Drive size	TX 20
Hardened	no
Head diameter	8 mm
Head shape	Countersunk head
Screw system	Torx
Two-compartment	no