

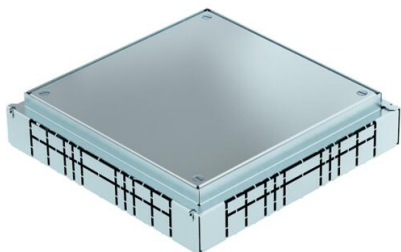
# Technical data sheet

## JBF underfloor connection socket

Item number: 7490097



Underfloor connection socket for metal ducts in the heights 25 mm and 38 mm.



**St** Steel

**FS** Strip galvanized

### Master data

|                     |                              |
|---------------------|------------------------------|
| Item number         | 7490097                      |
| Type                | JBF 20038                    |
| Description 1       | Underfloor connection socket |
| Description 2       | for metal duct               |
| Manufacturer        | OBO                          |
| Dimension           | 272x272x60                   |
| Material            | Steel                        |
| Surface             | Strip galvanized             |
| Surface standard    | DIN EN 10346                 |
| Smallest sales unit | 1                            |
| Unit of quantity    | Piece                        |
| Weight              | 293.64 kg                    |
| Weight unit         | kg/100 pc.                   |

# Technical data sheet

## JBF underfloor connection socket

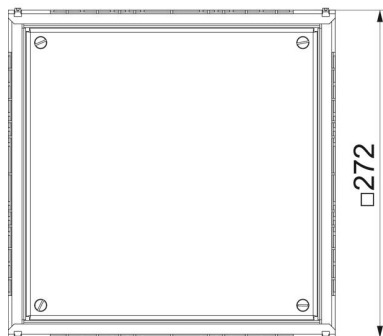
Item number: 7490097



### Dimensions



|             |        |
|-------------|--------|
| Length      | 272 mm |
| Width       | 272 mm |
| Height      | 30 mm  |
| Dimension h | 60 mm  |



### Technical data

|  |                                 |
|--|---------------------------------|
| Expansion option                             | For installation of accessories |
| Floor plate                                  | yes                             |
| Installation opening for on-floor tank       | no                              |
| Decouplable                                  | no                              |
| For pipe connection                          | no                              |
| Suitable for screed-covered underfloor ducts | yes                             |
| Trunking width, max.                         | 200 mm                          |
| Trunking width, min.                         | 50 mm                           |
| Trunking height, max.                        | 38 mm                           |
| Duct height, min.                            | 25 mm                           |