

# Technical data sheet

## PYROCOMB® Intube pipe shell, Ø 90 mm

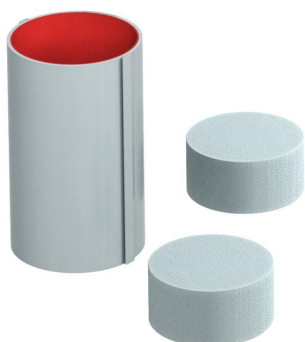
Item number: 7204292



Internally coated pipe shells with click lock. The inner space can be fitted with cables and electrical installation pipes completely. For interior application. CE-labeled, European approved construction product according to ETA-13/0904 and German general type approval. Fire resistance up to 120 minutes.

Closing with 2 foam plugs included in the delivery. The surface seal is created with PYROCOAT® ASX coating.

In some applications, the use of metallic tightening straps is prescribed to secure the pipe shells in light-duty partitions. Details can be found in the mounting instructions/approval.



**PVC** Polyvinylchloride

### Master data

Item number	7204292
Type	CTS 09150
Description 1	Pipe shell
Description 2	internally coated
Manufacturer	OBO
Dimension	81x150mm
Colour	Grey
Material	Polyvinylchloride
Smallest sales unit	1
Unit of quantity	Piece
Weight	27.5 kg
Weight unit	kg/100 pc.

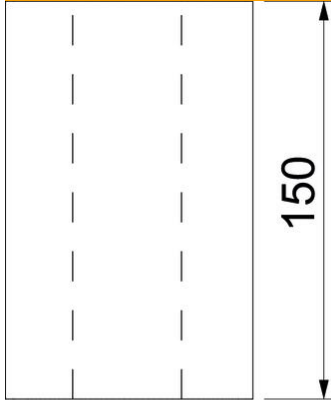
# Technical data sheet

PYROCOMB® Intube pipe shell, Ø 90 mm

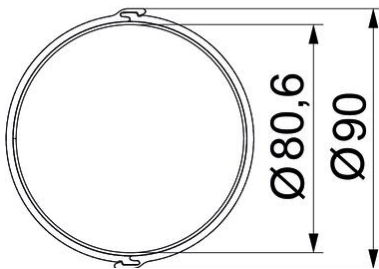
Item number: 7204292



## Dimensions



Length	150 mm
Dimension B	90 mm
Dimension d min.	80.6 mm
Dimension L	150 mm



## Technical data

Fire protection version	Assembly insulation
Shape	Round
For opening, max.	100 mm
For opening, min.	100 mm
Accessories required	no