

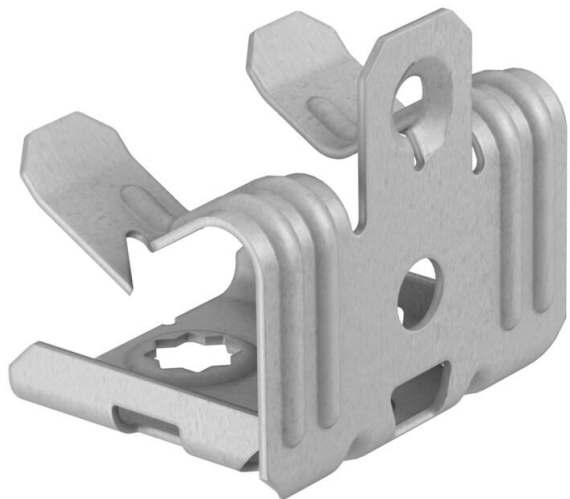
Technical data sheet

Beam clamp, with female thread

Item number: 1483625



Beam clamp for knocking in with internal thread as individual fastening solution on the beam.



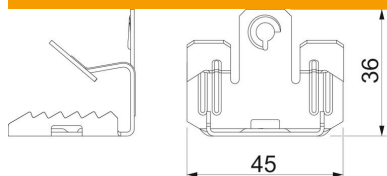
CE

St	Steel
ZL	Zinc slat

Master data

Item number	1483625
Type	BCUIT 14-20 M6
Description 1	Beam clamp
Description 2	with female thread M6
Manufacturer	OBO
Dimension	14-20mm
Material	Steel
Surface	Zinc slat
Surface standard	
Smallest sales unit	100
Unit of quantity	Piece
Weight	2.7 kg
Weight unit	kg/100 pc.

Dimensions



Dimension B	45 mm
Dimension L	36 mm

Technical data sheet

Beam clamp, with female thread

Item number: 1483625



Technical data

Connection type/component	Thread
Fastening type	Clamp
Fastening hole	7 mm
Flange thickness F max.	20 mm
Flange thickness F min.	14 mm
Thread	M6
Thread metric	6
Hinge, adjustable	no
Hinged	no