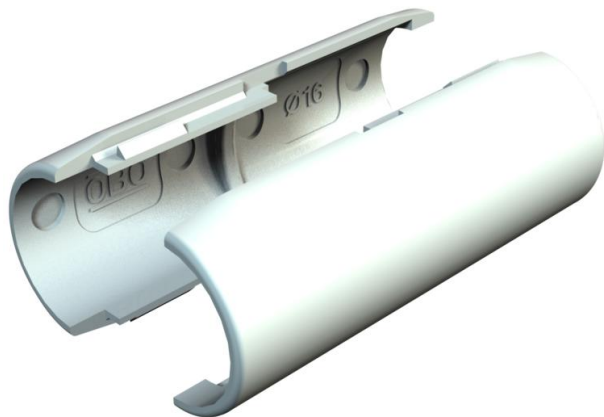


# Technical data sheet

## Quick pipe connecting sleeve, light grey

Item number: 2153835



Connection sleeve for plastic electrical installation pipes to create straight connections. Suitable for Quick pipe pipes or corrugated pipes. Toolless closing and opening. Can be used in a temperature range of -25 to +60 °C.

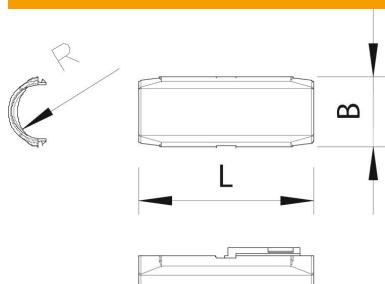


**PVC** Polyvinylchloride

### Master data

Item number	2153835
Type	2953 M M32 LGR
Description 1	Quick pipe connecting sleeve
Manufacturer	OBO
Dimension	M32
Colour	Light grey; RAL 7035
Material	Polyvinylchloride
Smallest sales unit	10
Unit of quantity	Piece
Weight	2.622 kg
Weight unit	kg/100 pc.

### Dimensions



Dimension B	38.7 mm
Dimension L	80 mm
Dimension R	15.95 mm

### Technical data

Thread	M32
Size	M32

# Technical data sheet

Quick pipe connecting sleeve, light grey

Item number: 2153835



## Technical data

Halogen-free	no
Polished surface	no
Permitted temperature range, max.	60 °C
Permitted temperature range, min.	0 °C